



X-431 ECU&TCU Programmer

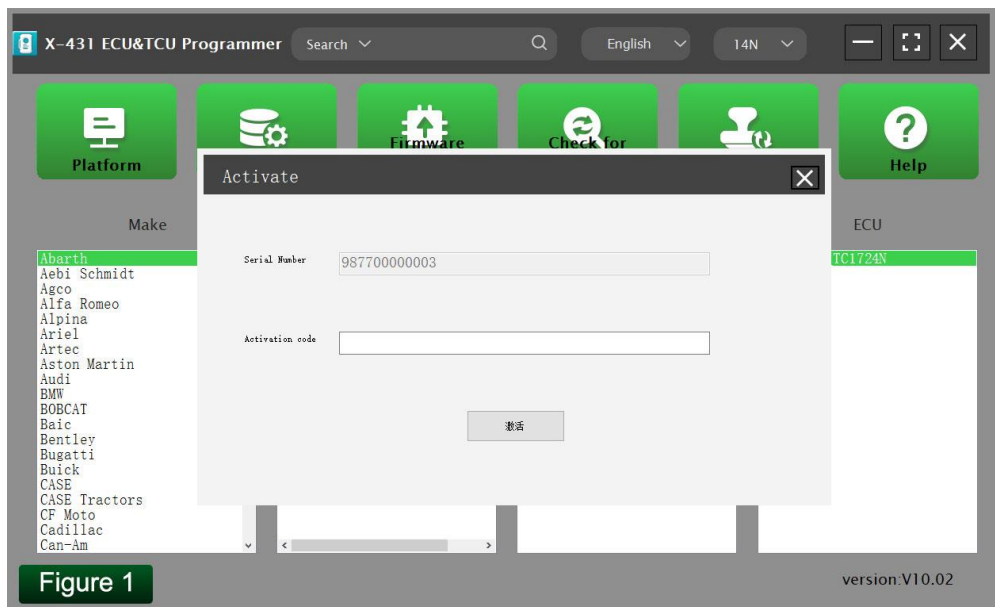
Product features

Product features

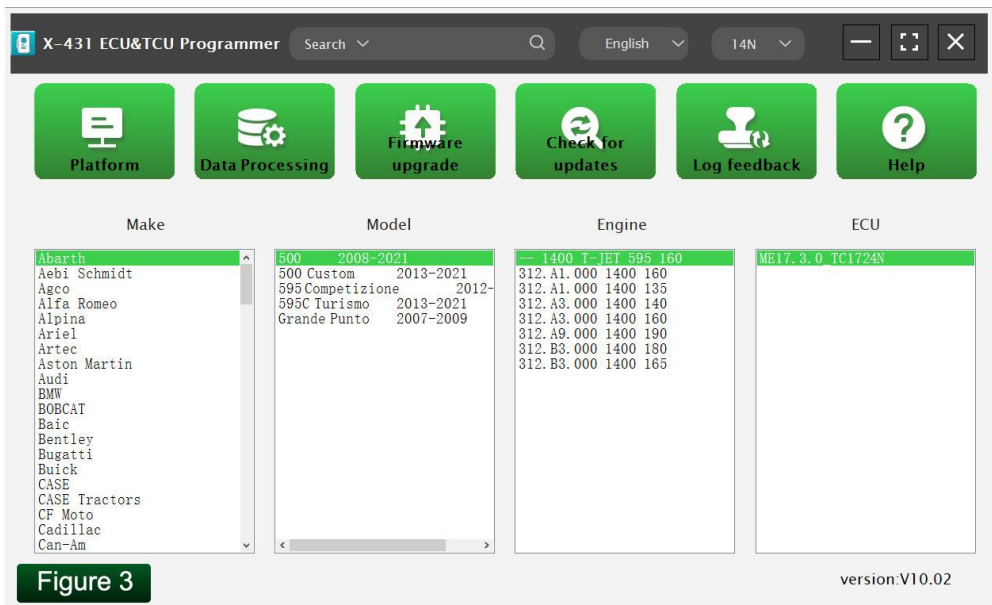
1. 2D menu, clear and easy to choose
2. Powerful search function
3. Convenient modification of ECU data
4. USB communication, with a speed more than three times that of Android devices, making it more stable
5. Easy to copy data
6. Support engine data validation function
7. Software download link: <https://en.cnlaunch.com/download>

PC Software Description

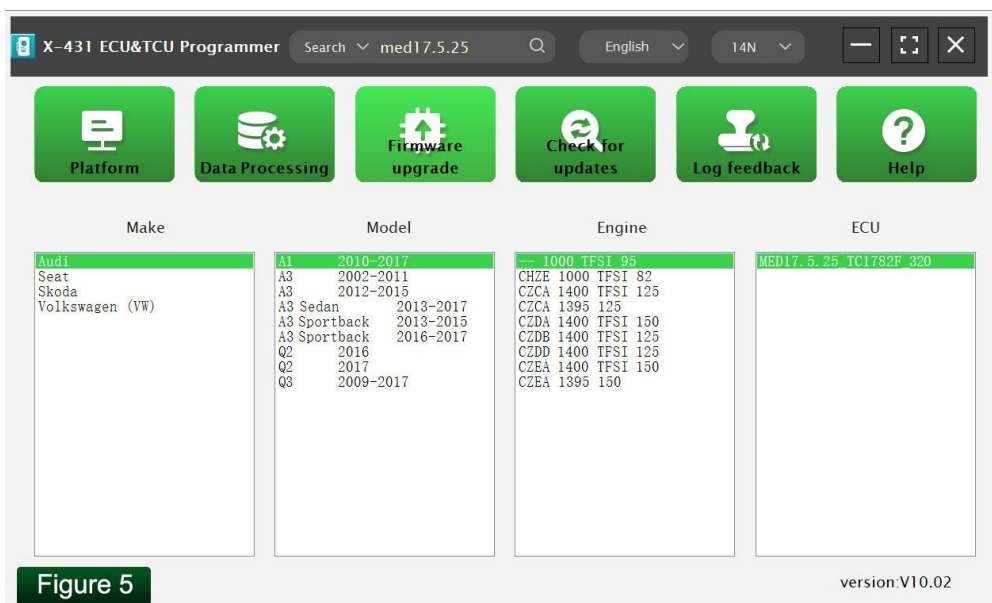
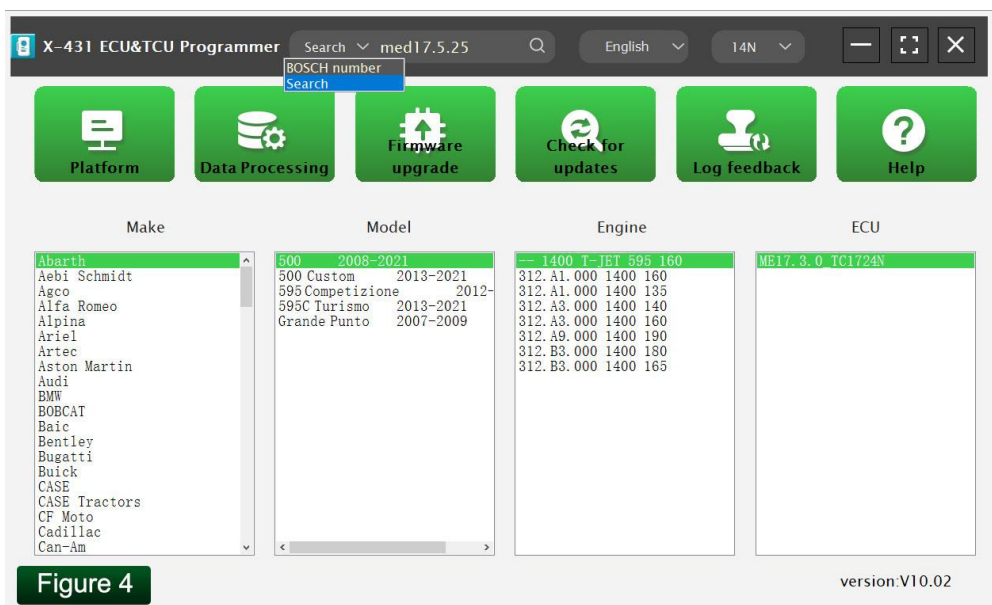
Firstly, connect the X-431 ECU&TCU Programmer to the computer. Then click to enter the software. The serial number will be automatically recognized from the X-431 ECU&TCU Programmer, and the activation code needs to be obtained from the envelope bar of the X-431 ECU&TCU Programmer. Click [Activate] to activate (only activate once, no need to activate again later), as shown in **Figure 1**. Without connection, you cannot access the software, as shown in **Figure 2**.



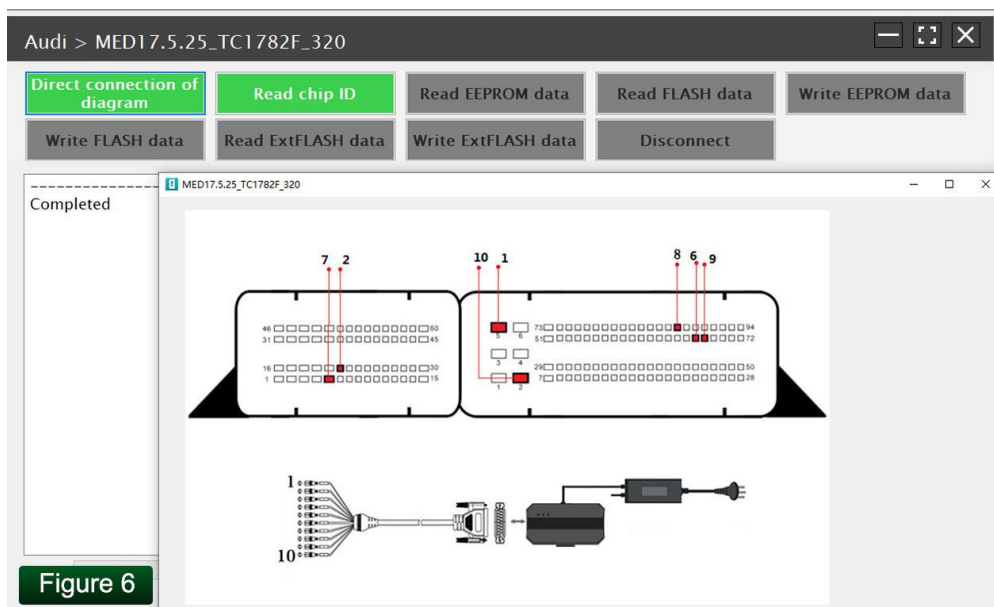
1. ECU Data Reading/Writing
 - 1.1 Obtain the related ECU
 - 1.1.1 Method 1: Obtain the desired ECU type through brand > model > engine > ECU in turn, as shown in **Figure 3**.



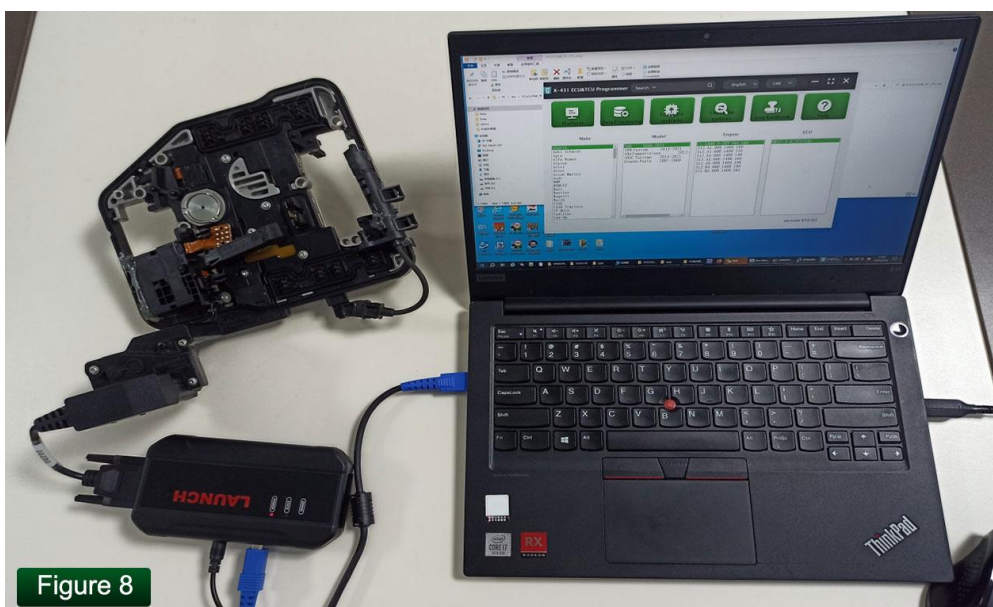
1.1.2 Method 2: Query the desired ECU by entering a value in the search box, as shown in Figure 4. For example, search for the MED17.5.25 engine by Search, as shown in Figure 5.



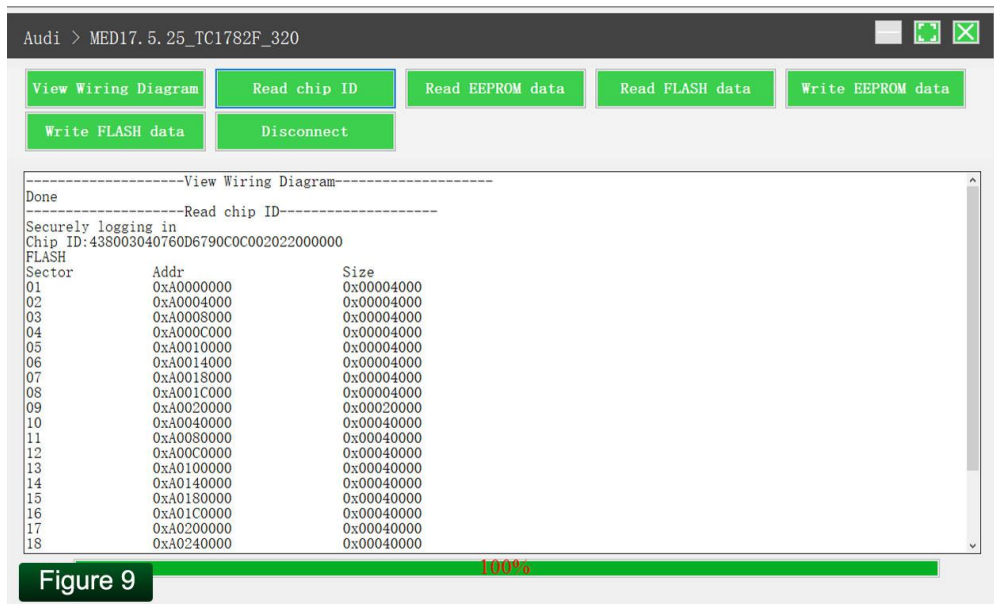
1.2 Click [Direct Connection Diagram] to obtain the ECU connection diagram, as shown in **Figure 6**.



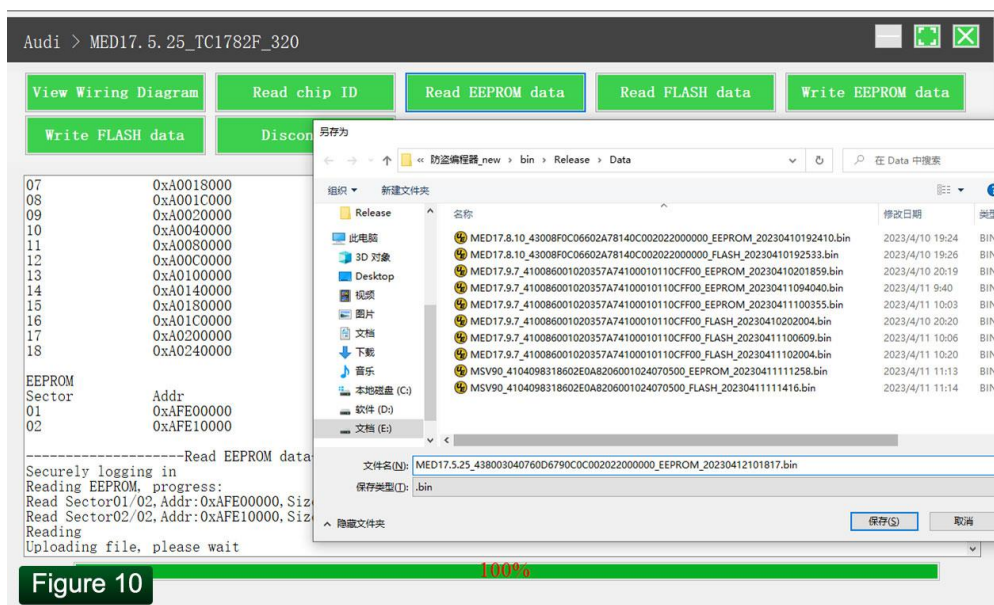
1.3 Connection: connect the ECU and PCBOX according to the information provided in the connection diagram. The physical connection diagram of MED17.5.25 (using the BENCH mode line) is shown in **Figure 7**, and the physical connection diagram using the gearbox adapter is shown in **Figure 8**.



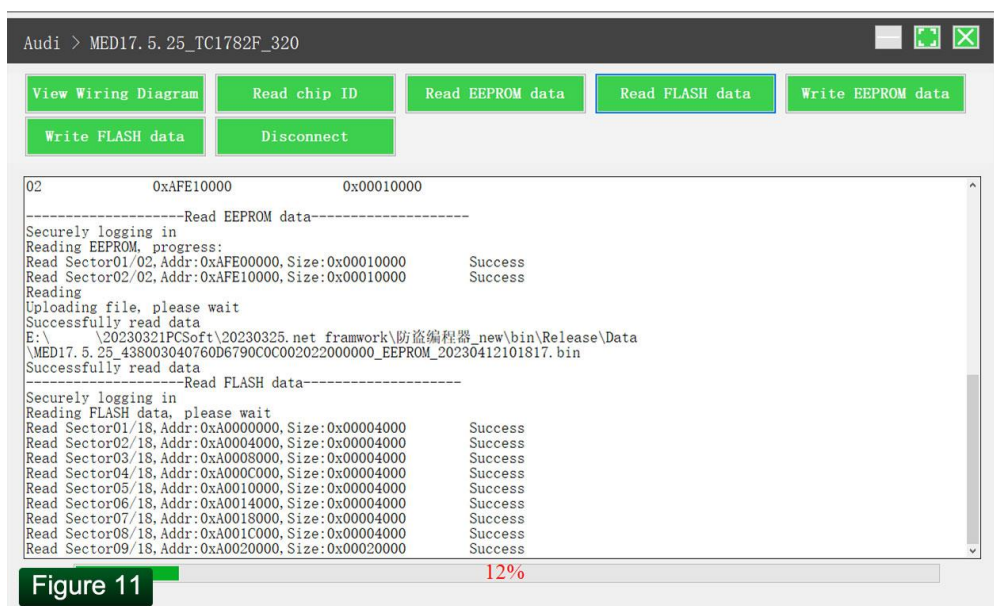
1.4 Read the chip ID, as shown in Figure 9.



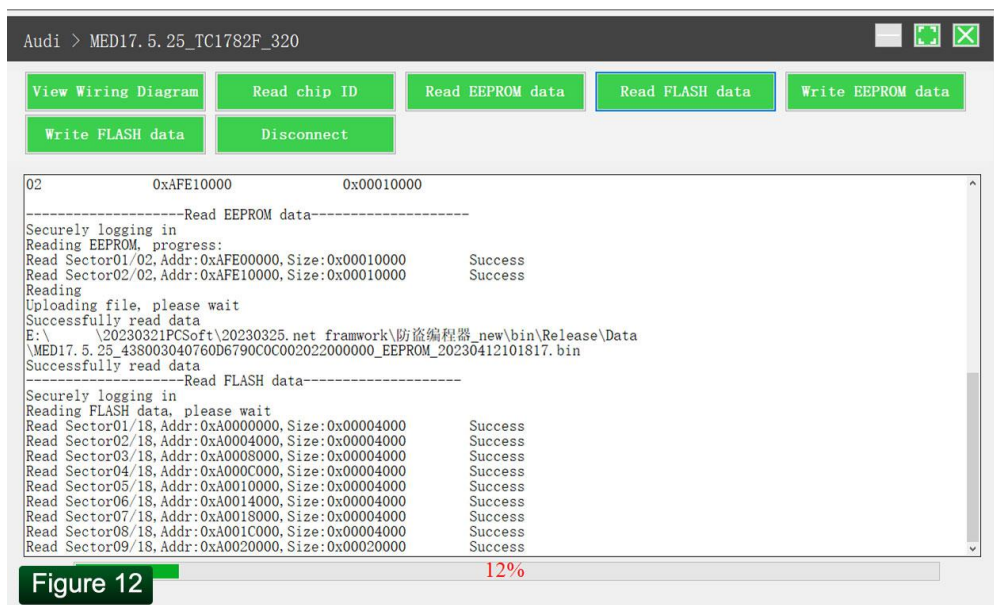
1.5 Back up the EEPROM data and save it, as shown in Figure 10 (the figure shows the save page of the read data).



1.6 Back up the FLASH data and save it, as shown in Figure 11 (the figure shows the process of reading FLASH data).

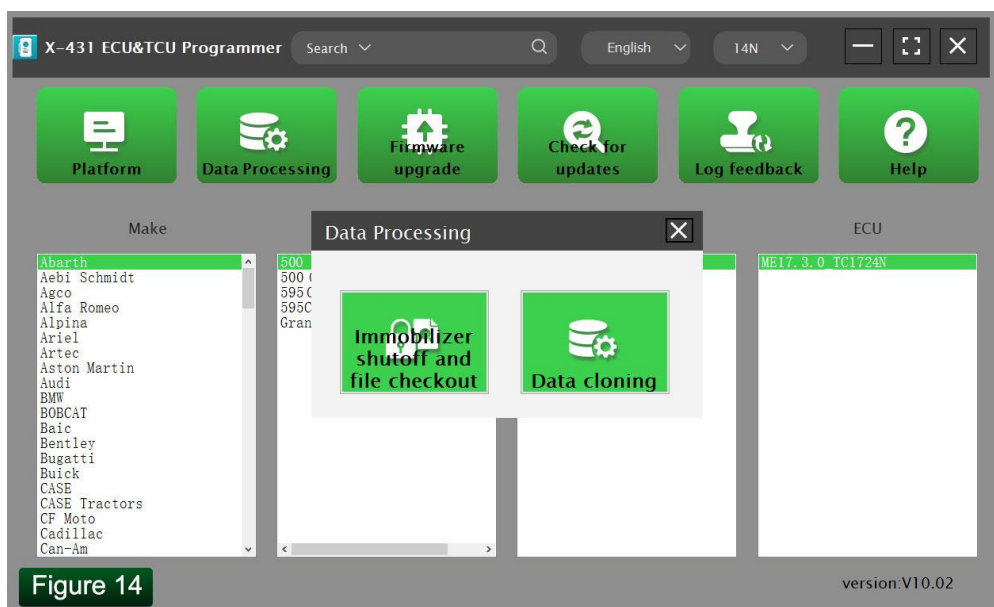
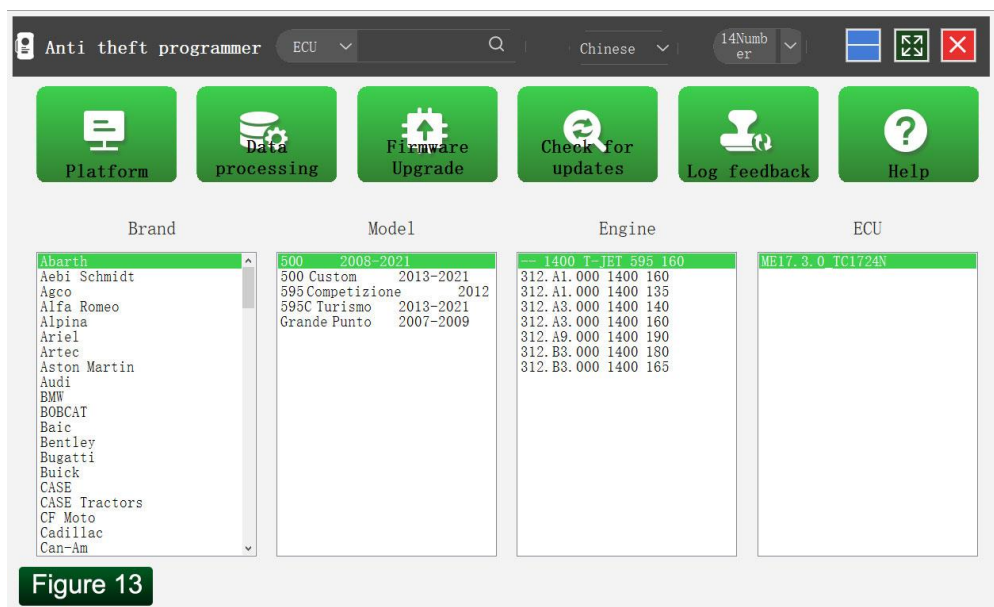


1.7 Restore EEPROM/FLASH data, as shown in **Figure 12** (the figure shows the file selection page).



2. Data Processing

2.1 Click the [Data Processing] button on the main page, as shown in **Figure 13**, and select [IMMO Off and File Verification] ([DTC Shield] is not currently supported), as shown in **Figure 14**.



2.2 File verification and IMMO off (process: select file > connect network to obtain > save file), as shown in Figure 15.

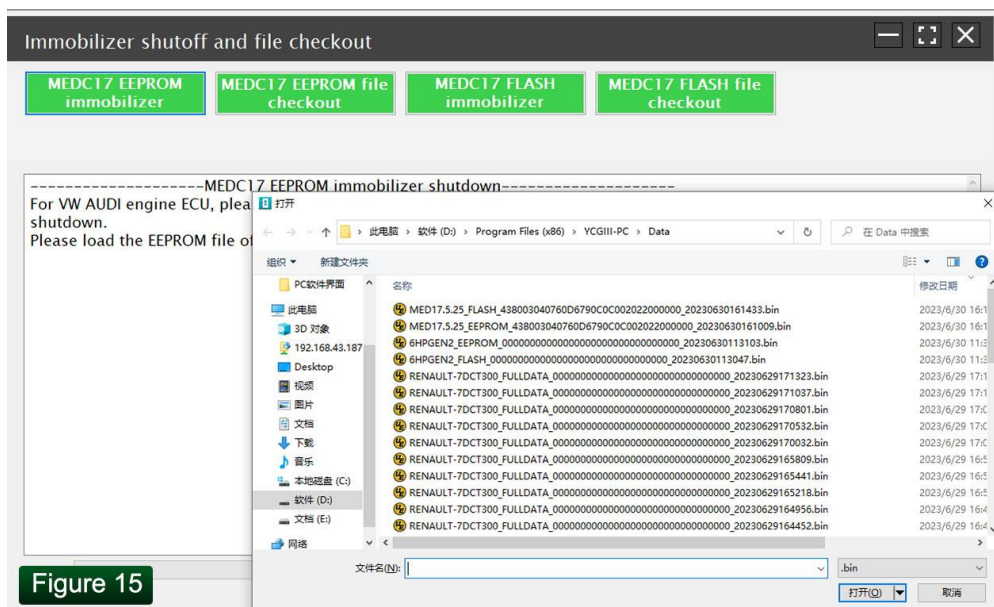


Figure 15